

Getting Started

Computer specifications

Andin2 is designed for PCs running 32-bit versions of Microsoft Windows. It has been tested on the following versions:

- Windows 7 (Professional, Enterprise and Ultimate)
- Windows XP Professional SP3 (but not recommended, as no longer supported by Microsoft)

It can also be installed on 64-bit versions of Windows, in which it installs in 32-bit mode.

It has not been tested thoroughly on Windows Vista, although limited experience (Business and Ultimate only) has exposed no problems. It has not been tested on older versions of Windows and these are not recommended.

At this time¹ it has not been tested thoroughly on newer versions of Windows, although limited experience on Windows 8, Windows 8.1 and Windows 10 suggests it is compatible.

Installation

An Andin2 installation consists of two components:

1. **the database.** There must be one and only one database, regardless of how many computers you use to access it. The computer with the database installed on it is your **database server**.
2. **the program.** This is installed onto each computer where you want to use Andin2 (these are your workstations, or “**clients**”). There must be at least one **client** installation. It can be on the **database server** if you wish, but does not have to be.

Before you start, you need to decide which computer will be your **database server**, and where on that computer. You do not have to go physically to that computer.

All the Andin2 **client** computers must have access to the **database server**.

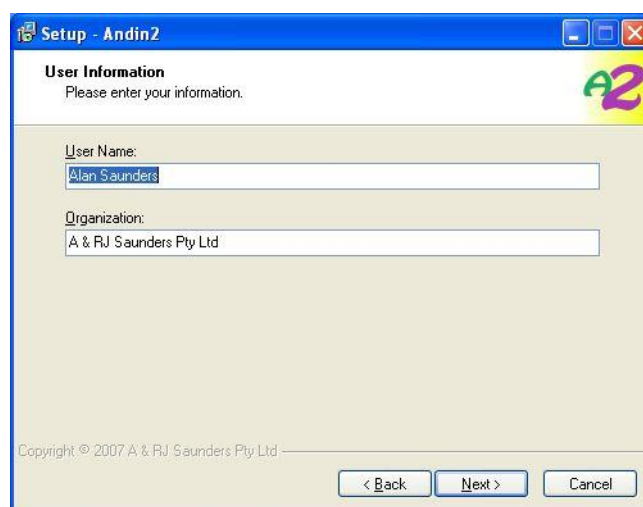
Note: if you are a DOS ANDIN site and intend to migrate your data into Andin2, it is strongly recommended you clean up the database first using AndinFix; a copy is supplied with the installer, including instructions. After running AndinFix, review its log to see if any other clean-up is required.

Server installation. Required

Just once, install in Server mode. Do this at a computer where you want to use Andin2, not necessarily at the **database server**. This installs the **client** program first then guides you through the setup of your **database server**.

Execute **Setup.exe** which starts the installation wizard. If installing from a CD, it will start automatically if autoplay is enabled.

When you get to the “User Information” page (see image), you can accept the pre-filled values. These are for Windows to know who did the install, they are not Andin2 login credentials.



The next page is "Select Destination Location" (see image). It defaults to your Program Files folder, which is usually fine.

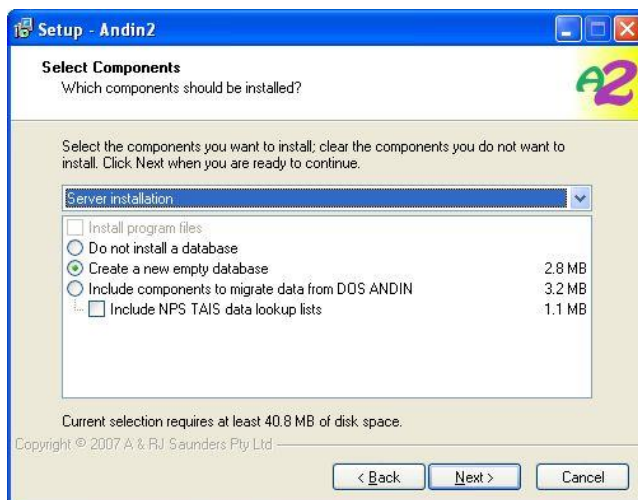
This destination is the location of the Andin2 client software, not the database. It should be on a local drive regardless of the database location.

Then it offers options of creating a new empty Andin2 database, or of migrating data from a DOS ANDIN database (see image).

As this is a server installation, it would not make sense to select "Do not install a database" – that would make it a workstation installation.

If

it with



your site was a member of the National Prescribing Service's Therapeutics Advice & Information Service (NPS TAIS) there is a checkbox here to include some essential lookup tables. If you are not a TAIS site, leave unticked else it will just waste some disk space unused files.

After a few more simple pages, the wizard will install the Andin2 client program as instructed. Then it will prompt you to proceed with your selected database creation instructions:

- for a new empty database, you will be asked to create your first Andin2 user account

In both cases you must nominate the location for the new Andin2 database (the **database server**). This must be an empty folder (if you type in a non-existent folder, Andin2 will attempt to create it). You can create it anywhere you want, e.g. a new folder called Andin2 on a shared drive, but it is strongly advised not to create it in your Program Files or Windows folders. Note that your decision here is not irrevocable; it is very easy to relocate an Andin2 database.

Migration from DOS ANDIN is a two-stage process. The first stage is a DOS program that converts your DOS data to an intermediate format; this can take a long time, even hours. The second stage is much quicker, it converts that intermediate format into Windows-compatible data.

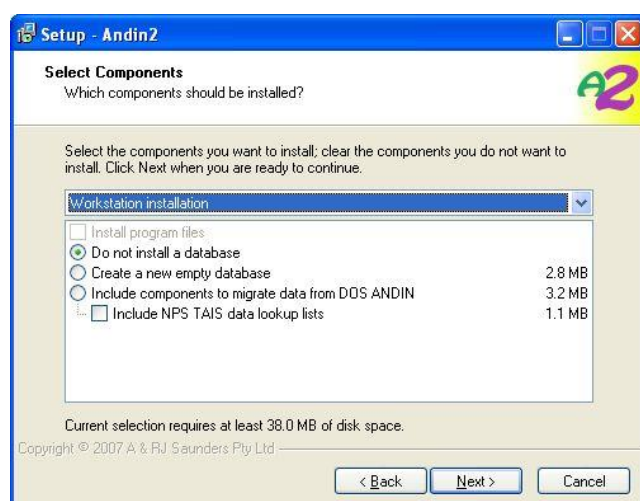
This is the minimum installation. If you need to run Andin2 only at this computer, your installation is finished.

The wizard also places a copy of its own Setup.exe in the program folder to help with subsequent workstation installations.

Workstation installation. Optional

Use this at the second and subsequent computers where you want to use Andin2. It installs the **client** only, which initially is unaware of the location of the database.

The workstation installation can be done by taking **setup.exe**, or the Andin2 CD to each of the



computers. Alternatively you can do it across the network by running the copy of Setup.exe in the initial installation if you have access to it.

Follow the wizard as above through the “User Information” and “Select Destination Location” pages.

This destination is the location of the Andin2 client software, not the database. It should be on a local drive regardless of the database location.

The database location is established later.

On the “Select Components” page, select “Workstation installation” (see image above).

First use

The first time the Andin2 client software is run on each computer, you will be prompted to activate it on that computer (see image).

You will need to send the blue Request code to Andin2 Administration (see footer on this page); the best way is to copy and paste the Request code into an e-mail. You will be given a response code for the red field.

Each computer will create a different Request code, but it will be consistent on that computer. Make sure to use the correct Response code for that computer.

Once activated, Andin2 can start up. If this was a workstation installation, it will prompt you for the database location.

The first time the database is accessed, it will build its indexes. For a new database this takes only a second or two; for a migrated database the time will depend on size of the database and, if across a network, the network speed.

Finally you will be prompted with the Andin2 login dialog:

- if this is a newly created database, you must enter the UserID you created during installation. There is no password for this account yet, so you must make one up (at least 6 characters)
- for a database migrated from DOS ANDIN, enter the UserID you used to do the migration. None of your DOS ANDIN passwords are included in the migration, including for this UserID, so make up a new password (can be the same as you had in DOS ANDIN as long as it is at least 6 characters)

In either case, because this is a new password you will be prompted to repeat it for confirmation. **Do not forget it: at the moment this is your only Andin2 user account and your only way to access the database.**

Note that in Andin2 both UserIDs and passwords are case insensitive.

Early tasks

There are several configuration issues that you might like to attend to soon after commencing with Andin2, especially for a newly created database. If you have migrated from DOS ANDIN, most of your old configurations will have been retained.

- user accounts: a newly created database has only the one UserID you created during the install; a migrated database has all of the old UserIDs, but all are inactive except the one you used during the install. You could set up or activate other user accounts
- several pick-lists and other local preferences can be tailored under Tools-Configuration



- if you intend to use Andin2's internal backup feature you must set up a location for backups; this is not necessary if your server is already backed up routinely, reliably and frequently (but you can do local backups as well anyway)
- you could do a backup straight away, it's a good habit to get into. In this case, it gives you an Andin2 starting point so you could have a play for a few days then restore to your baseline to discard the play data

Demonstration version

Everything above, and the legal stuff below, is equally applicable if your copy of Andin2 is a demonstration version. The only things different about the demonstration version are:

- it has an expiry date, after which it will stop working
- there is a limit to the number of new records that can be added.

It can be upgraded to the full version; optionally, any data that had been entered can be retained.

Learning how

Press F1 wherever you are for context-sensitive help. Alternatively, call up Help from the menu. Browse around – there is no printed manual, only the Help on your screen.

Getting help

Contact Alan Saunders (see page footer below).

Legal stuff

Andin2 is copyright © 2014 to A & RJ Saunders Pty Ltd. All rights reserved. This includes the executable program Andin2.exe and associated files and data structures as installed by the Andin2 installer, other than components that are already copyright to other parties.

Licensed users of Andin2 software are authorised to create ONE installation of Andin2 only. For the purpose of this licence agreement, ONE installation can include one or more computers in a local area network (LAN), each of which can have the Andin2 program installed, but all connecting to only one database. To put it simply, ONE licence = ONE database.

This licence is granted in perpetuum to the original licensee, other than for any demonstration or evaluation version in which case the licence expires on the declared expiry date. Under no circumstances can any copy of Andin2 be given, sold or otherwise transferred to any other party.

Andin2 is intended for small-scale operation, i.e. a single computer or a few computers in a LAN environment. Use on a larger scale, e.g. across a wide area network or on more than a single campus, is not covered by the standard licence. In such cases you are required to arrange licensing with the software owner specific to the circumstances. This paragraph does not exclude standard licensees from participating in data-sharing across the AndinNet2 network.

If any licence conditions are breached, A & RJ Saunders Pty Ltd reserves the right to revoke the licence without recompense.

August 2016, Andin2 build 56